



Project study

Mapping the DACH Private Equity landscape

05 June 2025

Introduction to EMZ



20+

Years of investing;
founded in 1999

20+

Investment
professionals

€1.5bn

Fund size of EMZ 10

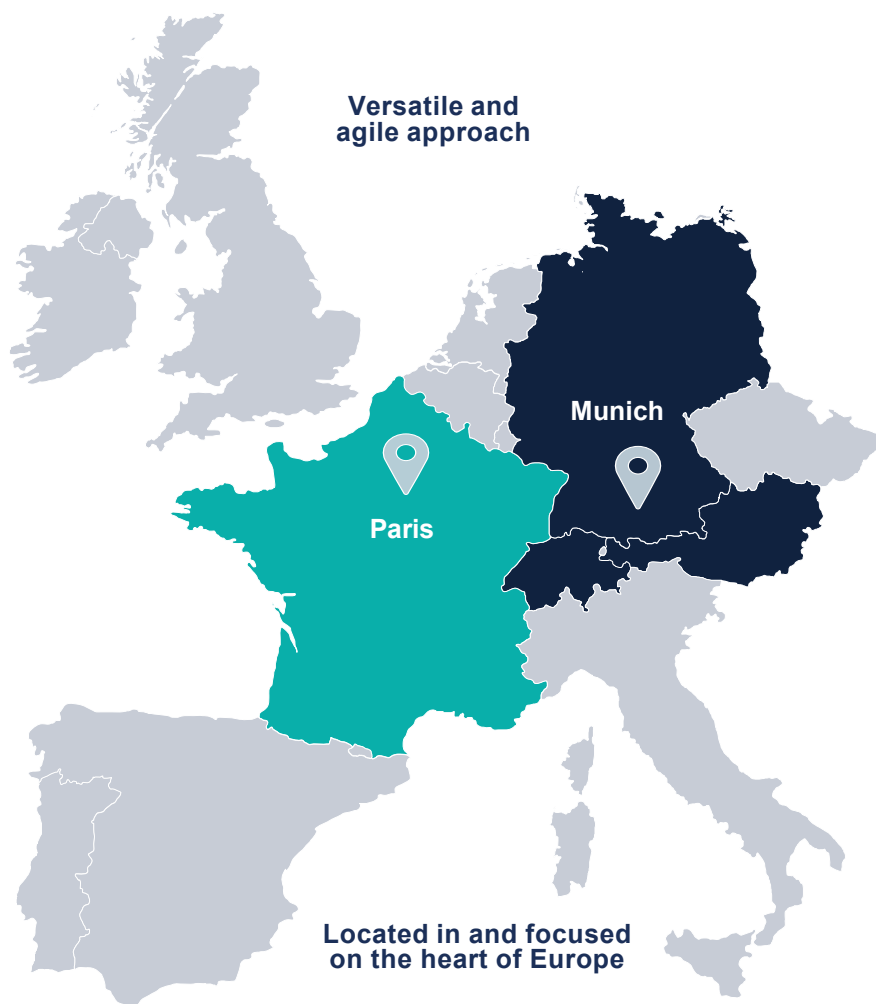
€5bn+

Of total funds
invested

150+

Investments since
inception

Versatile and
agile approach



Located in and focused
on the heart of Europe

Deal size

“Mittelstand”
€40-200m
ticket size

Partnership

Flexible capital
structure in
majority or
minority interests

Timeline

Long-term
commitments
beyond typical
holding periods
feasible

Focus

Growth,
profitability,
management

Backing founders, family shareholders,
and management teams



H&Z



Ankerkraut



FotoFinder



Simon Hegele

Factsheet on project study (1/2)

About

- Regular market screening and staying informed about recent developments in the private equity industry are critical for building a **strong and relevant deal pipeline**
- The project study has the objective to deliver a comprehensive mapping of the **private equity landscape** across the **DACH region**, i.e. assessing portfolio companies
- Eventually, the project will aid in the **efficient identification of management-centric deal opportunities relevant to EMZ**
- It will also contribute to the maintenance of a highly current and strategically relevant pipeline within EMZ's current focus **sectors Business Services, Healthcare, Software and Industrial Tech**

Goals & deliverables

Overview

Provision of an extensive screening on the portfolio companies within the DACH Private Equity landscape

Screening

Development of a structured mapping approach to analyze and categorize the screening and support an efficient deal sourcing approach

Deal pipeline

Advising EMZ on possible one-on-one investment opportunities aligned with its strategy and focus sectors

Project journey

Kick-Off

Introduction to EMZ, its investment strategy and tools/ data sources required for the project, ensuring alignment on project goals

Milestone 1

Definition and design of the mapping framework – development of the methodology and definition of criteria for the categorization of portfolio companies

Milestone 2

Creation of a comprehensive landscape of PE-backed companies in the DACH region by using databases and public sources and evaluation of portfolio companies aligning with EMZ's strategy

Milestone 3

Consolidation of findings into a final dataset as project deliverables and closing the project with a final presentation and joint review session

Factsheet on project study (2/2)

What is in for you?



Collaboration

Work closely with investment professionals from EMZ's Munich office on a focused research project in the private equity space



Application

Utilize your academic knowledge by contributing to a real-world, practice-oriented project with relevance to EMZ's investment strategy



Insights

Gain career-relevant exposure to the daily work of a European mid-cap investor with offices in Munich and Paris, offering initial experience at an early stage of a professional journey in private equity



Networking

Connect with EMZ professionals and expand your understanding of the private equity industry through knowledge sharing and early access to a valuable professional network.



Perspective

Experience private equity thinking and EMZ's unique management-centric investment approach and deepen your understanding of deal sourcing and mid-market dynamics

Engagement format

Who?

We are looking for a highly **motivated team of 2–3 students** who are available full-time with a strong interest in private equity and a desire to gain practical experience in a dynamic investment environment

When?

The project will run over a period of **three months**, starting on **01 September 2025** and is designed to allow for full-time engagement following structured milestones

Next steps

Please submit your CV to Luis Bischof: luis.bischof@emzpartners.com

EMZ Partners SAS

11 Rue Scribe, 75009 Paris, France

+33 (0)1 5330 2330

RCS Paris B 423 762 814

emz@emzpartners.com

EMZ Partners GMBH

Prannerstraße 10, 80333 Munich, Germany

+49 (0)89 4522 4100

RCS Munich HRB 254000

www.emzpartners.com

